

SRPX2 Antibody (N-Terminus)
Rabbit Polyclonal Antibody
Catalog # ALS13786**Specification**

SRPX2 Antibody (N-Terminus) - Product Information

Application	WB, IHC-P, IF, E
Primary Accession	O60687
Reactivity	Human, Mouse, Rat
Host	Rabbit
Clonality	Polyclonal
Calculated MW	53kDa KDa
Dilution	WB~~1:1000 IHC-P~~N/A IF~~1:50~200 E~~N/A

SRPX2 Antibody (N-Terminus) - Additional Information**Gene ID** 27286**Other Names**

Sushi repeat-containing protein SRPX2, Sushi-repeat protein upregulated in leukemia, SRPX2, SRPUL

Target/Specificity

Human SRPX2

Reconstitution & Storage

Short term 4°C, long term aliquot and store at -20°C, avoid freeze thaw cycles. Store undiluted.

Precautions

SRPX2 Antibody (N-Terminus) is for research use only and not for use in diagnostic or therapeutic procedures.

SRPX2 Antibody (N-Terminus) - Protein Information**Name** SRPX2**Synonyms** SRPUL**Function**

Acts as a ligand for the urokinase plasminogen activator surface receptor. Plays a role in angiogenesis by inducing endothelial cell migration and the formation of vascular network (cords). Involved in cellular migration and adhesion. Increases the phosphorylation levels of FAK. Interacts with and increases the mitogenic activity of HGF. Promotes synapse formation. May have a role in the perisylvian region, critical for language and cognitive development.

Cellular Location

Secreted. Cytoplasm. Cell surface. Synapse

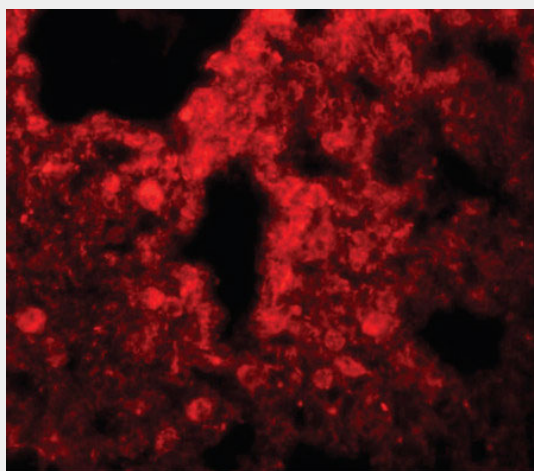
Tissue Location

Expressed in neurons of the rolandic area of the brain (at protein level). Highly expressed in the brain, placenta, lung, trachea, uterus, adrenal gland, heart, ovary and placenta. Weakly expressed in the peripheral blood, brain and bone marrow. Expressed in numerous cancer cell lines and in gastrointestinal cancer cells. Higher levels found in colorectal cancers than in normal colonic mucosa

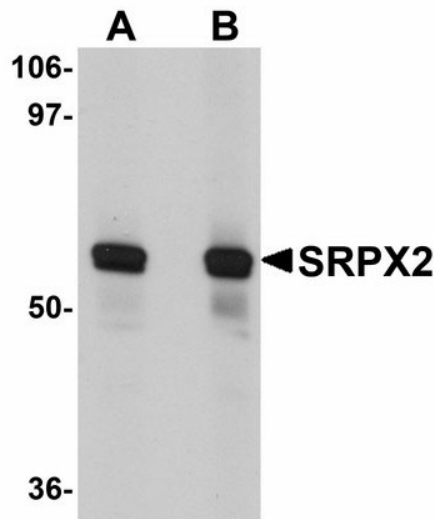
SRPX2 Antibody (N-Terminus) - Protocols

Provided below are standard protocols that you may find useful for product applications.

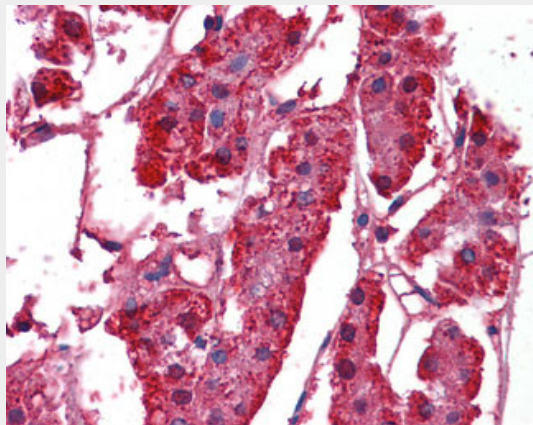
- [Western Blot](#)
- [Blocking Peptides](#)
- [Dot Blot](#)
- [Immunohistochemistry](#)
- [Immunofluorescence](#)
- [Immunoprecipitation](#)
- [Flow Cytometry](#)
- [Cell Culture](#)

SRPX2 Antibody (N-Terminus) - Images

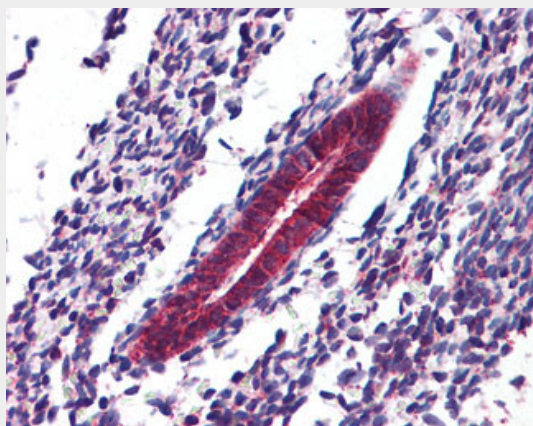
Immunofluorescence of SRPX2 in human lung tissue with SRPX2 antibody at 20 ug/ml.



Western blot of SRPX2 in human lung tissue lysate with SRPX2 antibody at (A) 1 and (B) 2 ug/ml.



Anti-SRPX2 antibody IHC of human adrenal.



Anti-SRPX2 antibody IHC of human uterus.

SRPX2 Antibody (N-Terminus) - Background

Acts as a ligand for the urokinase plasminogen activator surface receptor. Plays a role in angiogenesis by inducing endothelial cell migration and the formation of vascular network (cords). Involved in cellular migration and adhesion. Increases the phosphorylation levels of FAK. Interacts with and increases the mitogenic activity of HGF. Promotes synapse formation. May have a role in the perisylvian region, critical for language and cognitive development.

SRPX2 Antibody (N-Terminus) - References

Kurosawa H.,et al.Blood 93:321-332(1999).
Huang C.-H.,et al.Submitted (JUN-2001) to the EMBL/GenBank/DDBJ databases.
Otsuki T.,et al.DNA Res. 12:117-126(2005).
Ross M.T.,et al.Nature 434:325-337(2005).
Roll P.,et al.Hum. Mol. Genet. 15:1195-1207(2006).